

HIRED BY  
CHALCO ELEVEN LTD

**LMX**  
**LOCATE & MARK™**

GROUND PENETRATING RADAR  
TO DETECT BOTH SHALLOW  
AND DEEP TARGETS  
SIMULTANEOUSLY





## LMX200

The premier GPR locating tool in the market today

Acquire geo-reference data, create depth slices on-site and wirelessly export all information in formatted reports.



### Internal GPS

Geo-tagging targets in reports and Google Earth™

### On-site Reports

Produce instant reports from your unit. Include screen captures and line/grid/map view information



### High Resolution Touchscreen

Bright, sunlight-visible, high contrast display

### Optional External GPS

Higher resolution geo-referencing of targets for CAD and GIS

### Wi-Fi Connection

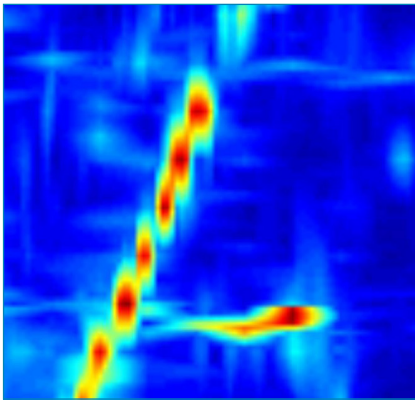
Connect to a Wi-Fi network or hotspot and instantly email a mini-report to your office or customers

## LMX200 FEATURES

### Unprecedented insights and target confidence Detect traditionally non-locatable subsurface features

Non-metallic pipes, including PVC and asbestos cement | Concrete storm and sewer systems  
Utilities where installed tracer wiring has failed | Underground storage tanks and drainage tiles  
Septic system components | Non-utility structures such as vaults, foundation walls and concrete pads

#### 3D DEPTH SLICING



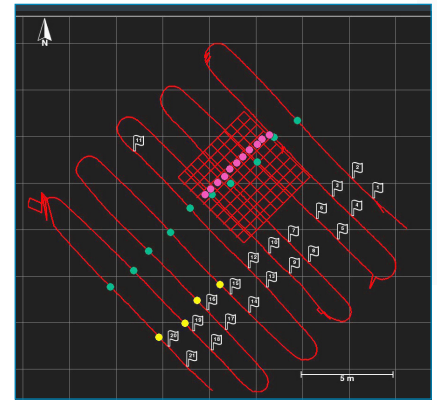
At complex sites, depth slicing reveals the orientation of pipes and cables at different depths and outlines the extent of vaults, foundations and buried tanks.

#### FIELD INTERPRETATIONS



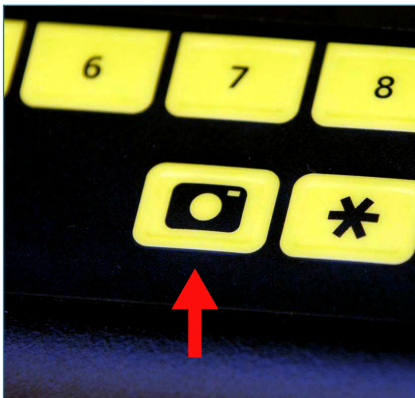
Classify targets in real time with field interpretations. Use the touchscreen to color-code each target as it is located.

#### MAP VIEW ON-SITE DISPLAY



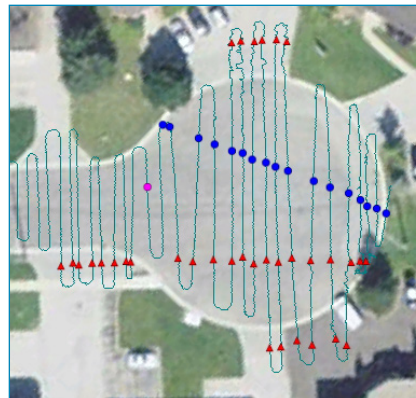
Using the optional external GPS, identified targets are displayed on the screen in a plan map view.

#### SCREEN CAPTURES



At any point during the survey save screen captures of line data, map views and depth slices.

#### GEO-REFERENCED OUTPUT



Display your location and targets in Google Earth™ and other similar geo-referenced platforms. Easily integrate utility locations into CAD drawings and GIS databases.

#### USB DATA TRANSFER



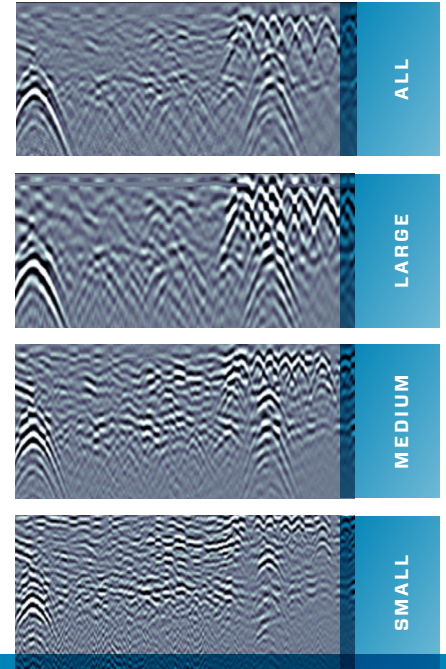
Data is saved to a memory stick for archiving and transfer to a computer.

# HIRED BY CHALCO ELEVEN LTD



## DYNAMIC TARGET ENHANCEMENT (DynaT)

DynaT optimizes views of small, medium and large targets. These views can be toggled, giving you unprecedented insights and target confidence.



## Specifications

	LMX100	LMX200
Data Analysis	In-field analysis	In-field analysis <b>Enhanced:</b> Post-processing analysis using EKKO_Project
Signal Enhancement	DynaQ stacking, spatial filtering	DynaQ stacking, DynaT, spatial filtering
Data Storage	>10,000 graphic data images (.jpg) depending on external flash memory (up to 64 GB)	350 km (>200 miles) of line data in internal memory
Dimensions & Weight	<b>Size:</b> 100 × 70 × 115 cm (39.4 × 27.6 × 45.3 in) <b>Weight:</b> 22kg (48 lbs) <b>Screen Size:</b> 21 cm (8 in) diagonal <b>OPTIONAL:</b> <b>System Transport Case:</b> 81 × 74 × 51 cm (32 × 29 × 20 in) <b>Display Unit Carrying Case:</b> 34 × 30 × 14 cm (13.5 × 12 × 5 in)	
Power	1.25 A @ 12 V <b>Battery:</b> Sealed Lead Acid Gel Cell <b>Life:</b> 4-6 hrs <b>Capacity:</b> 9 Ah <b>Charger:</b> 110 - 240 V for use all over the world	
Environmental	IP65 <b>Temperature: Sensor:</b> -40°C +50°C <b>Display Unit:</b> -10°C +50°C	
Depth	Collects data to 8 m (26 ft)	

LMX100 and LMX200 are available in multiple languages

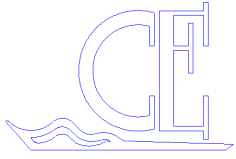
**LMX200 Enhanced provides access to digital data for advanced processing, analysis and reporting.**

**LMX200 Enhanced option includes:**

Display Unit upgrade package

EKKO\_Project software

Regulatory Specifications: Meets FCC 15.509, Industry Canada RSS-220, ETSI EN-302066



## LMX100

The simple, affordable way to locate and mark utilities in the field

Offers the perfect balance of depth penetration and high resolution for accurate locating

### Field-proof Display

Rugged, weatherproof, sunlight-visible data logger used for data acquisition, data display and processing

### Multi-language Menu

Selectable menu in more than 10 languages

### Lightweight Cart

Rugged fiberglass cart eliminates metallic structure interference

### GPR Sensor

High-resolution, ultra-wideband (UWB) GPR technology, ground coupled for maximum signal penetration

### Fully Enclosed Odometer

Enables precision data collection even in poor terrain



**LMX100 is also available with a High Resolution screen. Additional features include:**

- \* Touchscreen
- \* Data Markers
- \* Wi-fi
- \* Mini-reports
- \* Internal GPS
- \* Geo-tagging
- \* System Usage Report
- \* USB for data transfer
- \* Full collection review
- \* Digital hyperbola calibration
- \* Horizontal scaling



